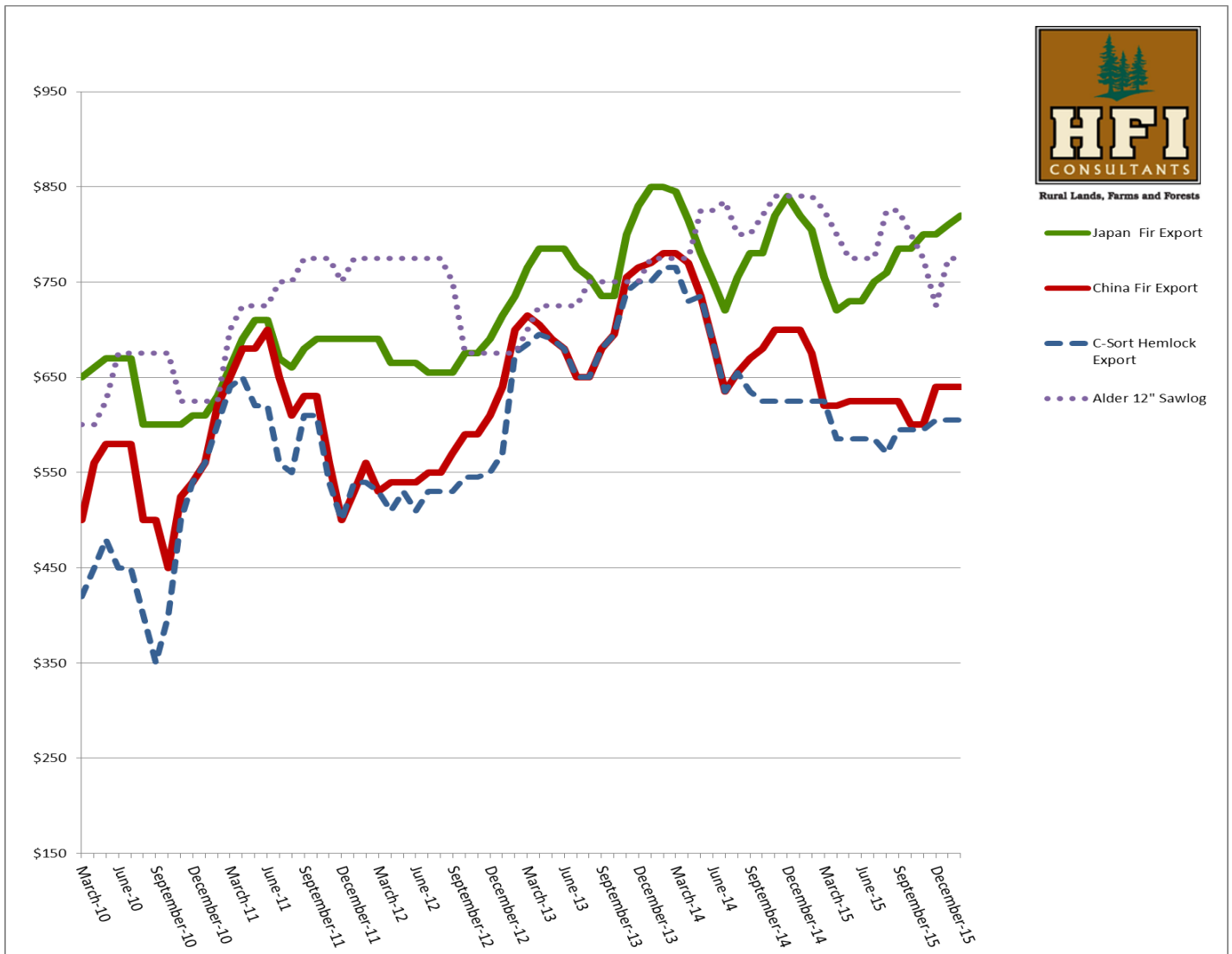


5 Year Log Price Trends



Rural Lands, Farms and Forests

- Japan Fir Export
- China Fir Export
- - - C-Sort Hemlock Export
- Alder 12" Sawlog

Japanese logs are in great demand right now due to a short supply. The prices are very good at the moment, but don't expect that to last much past the 1st Quarter. Sooner or later, the demand will be met and the prices will drop quickly.

Domestic and China quality logs are fairly flat and any improvement in prices may be a long ways off due to the Chinese economy. Alder jumps up and down based on each individual mill needs. Cedar log prices are still very high. Poles are good as well.

Planting season is upon us with what looks like a shortage of good quality seedlings throughout the industry. If you have not purchased your seedlings yet, you may have to wait until next year. Be sure and spray your site for weeds and brush before you plant.

*This graph is intended to show market trends. Actual prices may be different at time of harvest.

www.hficonsultants.com 10 South Parkway Ave. Suite 201 Battle Ground, WA 98604 360-723-552