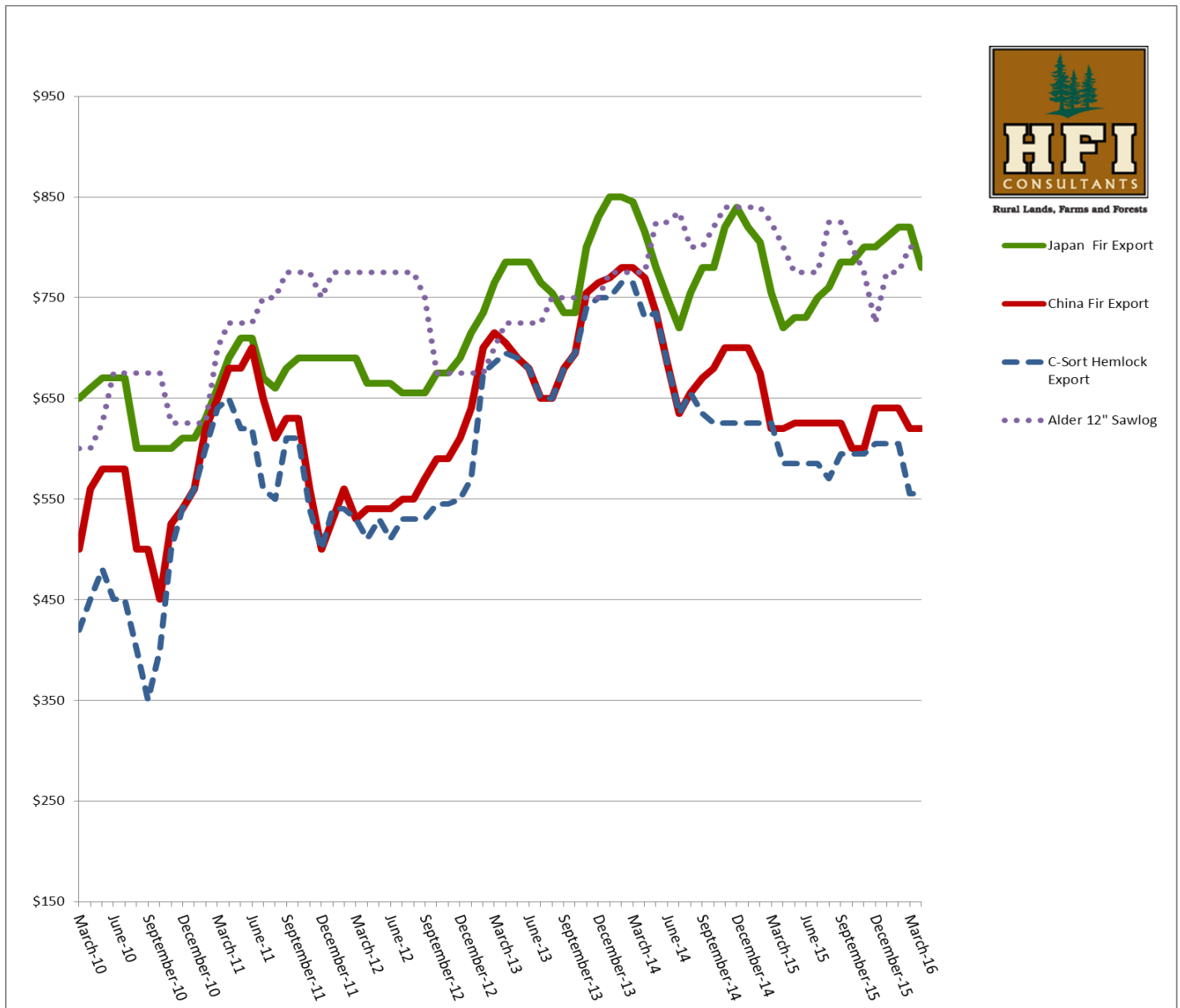


5 Year Log Price Trends



Rural Lands, Farms and Forests

- Japan Fir Export
- China Fir Export
- - - C-Sort Hemlock Export
- Alder 12\" Sawlog

Log prices have dropped or stayed even for the 2nd Quarter of 2016. Demand has dropped on all conifer sorts. This has been a pretty typical pattern as the bigger timber companies begin to ramp up production increasing supply. Expect further declines in prices until 4th Quarter.

On the plus side, Alder and poles are still in demand as is cedar.

HFI is selling for a private landowner, about 700 mbf of standing timber (mostly Doug-fir). The lump sum bid for this sale is due on May 15, 2016 at 2:00 pm. This sale is located north of Battle Ground WA. Look on our website for more information: www.hficonsultants.com

HFI still has a limited supply of fir and cedar seedlings. We expect to be sold out by May 1. If you need a bag or two, give our office a call at 360-723-5523

*This graph is intended to show market trends. Actual prices may be different at time of harvest.

www.hficonsultants.com 10 South Parkway Ave. Suite 201 Battle Ground, WA 98604 360-723-552